



*Stylish, Comfortable, & Affordable
Natural Fibre Clothing.*

[Women](#)
[Men](#)
[Colours](#)
[Fabrics](#)
[Ordering](#)

Welcome to Our Summer Collection for 2010/11



Summer Collection 2010/11 - Women



*Easy Fit

L322 - Long Top \$59.95
Cotton Herringbone - Colour Douce



*Easy Fit

L326 - 3/4 Pants \$59.95
Cotton Herringbone - Colour Douce



FU1 - S/L Top \$39.95
Fusion - Colours Nature & Wheat (not shown)



FU2 - Singlet Top \$34.95
Fusion - Colours Nature (not shown) & Wheat

[Back to Top](#)

Summer Collection 2010/11 - Women



FU4 - Layer Top \$49.95
Fusion - Colour Nature



FU5 - 3/4 Pants \$54.95
Fusion - Colour Wheat



FU6 - Dress \$54.95
Fusion - Colour Nature



LN1 - Strap Top \$44.95
Noblesse - Colour Nature

[Back to Top](#)

Summer Collection 2010/11 - Women



LN2 – Sleeveless Lace-up Top \$49.95
Noblesse – Colour Nature (not shown)



LN3 – Sleeveless V-neck Top \$44.95
Noblesse – Colour Bluebell (not shown)



LN4 – Top w/cap sleeves, V-neck \$54.95
Noblesse – Colour Fuchsia



LN5 – Top ¾ sleeve w/tie \$59.95
Noblesse – Colour Fuchsia

[Back to Top](#)

Summer Collection 2010/11 - Women



LN6 – Skirt $\frac{3}{4}$ length \$69.95

Noblesse – Colours Nature & Bluebell (not shown)



LN7 – Long Pants \$59.95

Noblesse – Colours Nature (not shown) & Fuchsia



LBH8 – Top \$64.95

Bohemian – Colour Peach



LBH9 – $\frac{3}{4}$ Sleeve Dress w/print \$69.95

Bohemian – Colour Nature

[Back to Top](#)

Summer Collection 2010/11 - Women



LBH10 – S/L Dress w/print \$59.95
Bohemian – Colours Nature & Peach (not shown)



LBH11 – Long Pants \$59.95
Bohemian – Colours Nature (not shown) & Peach



LBH12 – Dress \$79.95
Bohemian – Colour Peach



LU1 – Sleeveless Shirt \$59.95
Unique – Colours Nature & Wheat (not shown)

[Back to Top](#)

Summer Collection 2010/11 - Women



LU2 - S/S Shirt \$54.95

Unique - Colours Nature (not shown) & Wheat



LU5 - Skirt \$69.95

Unique - Colours Nature & Wheat (not shown)



LU6 - Long Pants \$59.95

Unique - Colours Nature (not shown) & Wheat



LSW250A - S/L Top \$59.95

Woven Silk & Cotton - Colour Wheat Striped

[Back to Top](#)

Summer Collection 2010/11 – Women



LSW253 – S/L Top \$54.95

Woven Silk & Cotton – Colour Nature



LSW255 – Pants \$74.95

Woven Silk & Cotton – Colour Blue Striped (not shown)



LSW256 – ¾ Pants \$69.95

Woven Silk & Cotton – Colour Wheat (not shown)



LSW257 – Long Pants \$69.95

Woven Silk & Cotton – Colour Wheat

[Back to Top](#)

Summer Collection 2010/11 - Women



LSW260 (Matches LSW261) \$69.95
Woven Silk & Cotton - Colour Wheat Striped



LSW261 - 3/4 Length Skirt \$89.95
Woven Silk & Cotton - Colour Wheat Striped



LSW263 - S/L Dress \$99.95
Woven Silk & Cotton - Colour Peach Striped



*Easy Fit

LSW267 - 3/4 Pants \$69.95
Woven Silk & Cotton - Colours Nature & Wheat (not shown)

[Back to Top](#)

Summer Collection 2010/11 - Women



*Easy
Fit

LSW268 – Long Pants \$69.95
Woven Silk & Cotton – Colours Nature &
Wheat (not shown)



LSK215 – Strap Top \$49.95
Thin Knit Silk & Cotton – Colours Wheat (not shown)
& Bluebell



LSK216 – S/L Top w/neck effect \$49.95
Thin Knit Silk & Cotton – Colours Nature &
Peach (not shown)



LSK218 – Mini Slv Top w/lace \$54.95
Thin Knit Silk & Cotton – Colours Nature &
Wheat (not shown)

Summer Collection 2010/11 - Women



LSK219 – S/S Classic Top \$49.95

Thin Knit Silk & Cotton – Colours Bluebell & Peach (not shown)



LSK224 – ¾ Length S/L Dress \$69.95

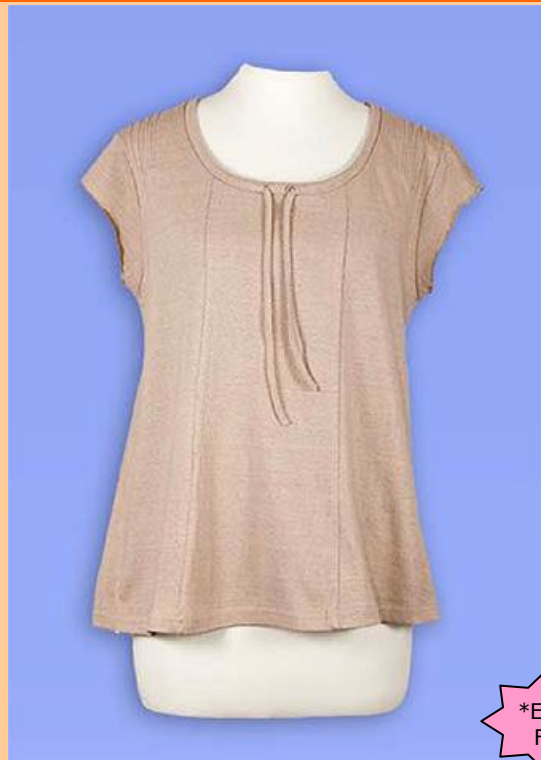
Thin Knit Silk & Cotton – Colour Bluebell



*Easy Fit

LSK225 – S/L Top X-over chest \$49.95

Thin Knit Silk & Cotton – Colours Nature & Wheat (not shown)



*Easy Fit

LSK226–Cap Slv.Top String Neck \$59.95

Thin Knit Silk & Cotton – Colours Wheat & Peach (not shown)

[Back to Top](#)

Summer Collection 2010/11 - Women



LSK229 – S/S Top w/lace & buttons
\$59.95

Thin Knit Silk & Cotton – Colours Nature & Bluebell (not shown)

Earth Collection Label Ladies Size Guide		
Standard Range	Size	Easy-Fit Range *
8 - 10	SML	12 - 14
10 - 12	MED	14 - 16
12 - 14	LGE	16 - 18
14 - 16	XL	18 - 20
16 - 18	XXL	20 - 22

- Easy-Fit range provides a more generous cut of fabric and is usually more suited to the fuller figure.

See wholesale price list for available colours.

[Back to Top](#)

Summer Collection 2010/11 - Men



M104 – S/S S/up Collar, Pocket \$59.95
Cotton Herringbone – Colour Douce (not shown)



MU1–S/S Shirt, w/b/down collar \$69.95
Unique – Colours Nature (not shown) & Wheat



MSW62 – S/S Classic, B/D Collar \$74.95
Woven Silk & Cotton – Colour Wheat Striped



MSW63 – S/S Shirt, S/up Collar \$74.95
Woven Silk & Cotton – Colours Blue Striped
(Wheat – not shown \$69.95)

[Back to Top](#)

Summer Collection 2010/11 - Men



MSW65 – L/Slv. Shirt \$89.95
Woven Silk & Cotton – Colour Wheat Striped
(not shown)



MSW66 – Long Classics w/side pockets \$79.95
Woven Silk & Cotton – Colour Wheat (not shown)



MSW67 – “Cool” Bermuda Shorts \$69.95
Woven Silk & Cotton – Colours Wheat Striped &
(Nature & Wheat – not shown \$64.95)

Mens Shirts Size Guide		
Chest Size (cm)	Earth Collection	
98	SML	
104	MED	
110	LGE	
116	XL	
122	XXL	
Mens Waist Size Guide		
cm		Inches
82	SML	32
87	MED	34
92	LGE	36
97	XL	38
102	XXL	40

[Back to Top](#)

Colour Swatches



Nature
(Knitted Silk texture)



Douce
(Herringbone texture)



Mint
(Herringbone texture)



Peach
(Bohemian texture)



Wheat
(Fusion texture)



Fuchsia
(Noblesse texture)



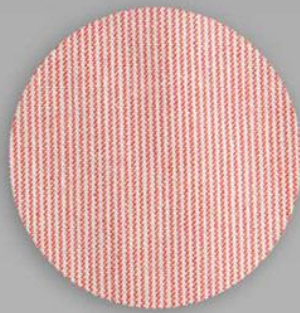
Bluebell
(Knitted Silk texture)



Wheat Striped
(Men's Organic texture)



Wheat Striped
(Woven Silk texture)



Peach Striped
(Woven Silk texture)



Bluebell Striped
(Woven Silk texture)



Wheat
(Unique texture)



Sand
(Authentic texture)



Fuchsia Striped
(Baby Organic texture)



Wheat Striped
(Baby Organic texture)



[Back to Top](#)

FABRICS

Cotton Herringbone:

Made from 100% Cotton (which is slightly heavier in weight than our other fabrics) using environmentally friendly dyes that are free of heavy metals and gentle on the skin. Very soft and extremely comfortable to wear and allow the body to breathe.

The same type of dyes are used throughout our clothing range.

Fusion:

"American Vintage", a special knitted jersey is very popular right now. Earth Collection have decorated further with a spider web thin woven fabric and named this brand new quality, *Fusion*.

This light fabric is comfortable to wear and creates a relaxed and understated style.

Noblesse:

Earth Collections new feather-light *Noblesse* fabric does not only have a delicate and soft hand feel but also has a very nice and comfortable "give". This light weight cotton line features some fantastic styles including several cute summer tops, flowy pants and skirts and a kaftan to round it all off.

Available in a bright range of colours, this line is a "must have" this summer!

Bohemian:

Wear our LBH10 top over a bikini on the beach and you immediately achieve that sweet *Bohemian* summer look. Going out for dinner or drinks with friends? Step into a pair of heels and our new LBH12 dress, or jump into a pair of straight legged pants or jeans and put on our new LBH9 tunic top.

It's *Bohemian* sweet!

Unique:

Unique is a brand new crisp and yet soft summer cotton quality in the Earth Collection this season. The ladies' styles are classic and feminine and the fabric makes them both elegant and, well, unique. The fashion this summer dictates that "men's shirts in delicate fabrics are in" and we are therefore pleased to also offer a couple of short sleeve men's shirts in *Unique*.

This line is available in the natural and beautiful colours Nature and Wheat.

Woven Silk/Cotton:

Woven Silk is ideal for classic and well fitted shirts and pants as these cuts highlight the characteristic of this ever popular quality in the Earth Collection. Our women's range also includes a combination line where stripes and solid colours are mixed together.

In the men's range we offer a classic and a selection of casual-smart shirts and pants.

[Back to Top](#)

ORDERS

Orders can be placed by phone (07) 4945 1110, via our website www.climateclassics.com.au or you can send your order to us via email to: climateclassics@qldnet.com.au

All orders are subject to availability at the time of your order.

Climate Classics is the only stockist in Australia of the Earth Collection Range Spring/Summer Collection for 2010/2011.

Womens Sizes

Standard Range	S	M	L	XL	XXL	XXXL
The Earth Collection	08-10	10-12	12-14	14-16	16-18	18-20
UK Sizing	10	12	14	16	18	20
French Sizing	38	40	42	44	46	48
Bust (inches)	34	35½	37	39	41	43
Bust (cm)	86.5	90	94	99	104	109
Waist (inches)	27	28	30	32	34½	37
Waist (cm)	68.5	71	76	81	87.5	94
Hips (inches)	36	37½	39½	41½	43½	45½
Hips (cm)	91.5	95.5	100.5	105.5	110.5	115.5

Easy-Fit Range*	S	M	L	XL	XXL	XXXL
The Earth Collection	12-14	14-16	16-18	18-20	20-22	22-24
UK Sizing	14	16	18	20	22	24
Bust (inches)	37	39	41	43	45	47
Bust (cm)	94	99	104	109	115	120
Waist (inches)	30	32	34½	37	39	41
Waist (cm)	76	81	87.5	94	102	109
Hips (inches)	39½	41½	43½	45½	47½	49½
Hips (cm)	100.5	105.5	110.5	115.5	120.5	125.5

Mens Sizes

Men's Shirts Size Guide		
Chest Size (cm)	Earth Collection	Other Labels
104	MED	SML
110	LGE	MED
116	XL	LGE
122	XXL	XL
128	~	XXL
132	~	3XL

Mens Waist Size Guide		
cm	-	Inches
82	SML	32
87	MED	34
92	LGE	36
97	XL	38
102	XXL	40
107	3XL	42
112	4XL	44

PAYMENT

Please note all orders are subject to payment at time of ordering. Payment can be made via phone using CREDIT CARD. Call - 07 49451110.

Janine

